

An aerial photograph of a large industrial complex, likely a steel mill, with numerous buildings, pipes, and a prominent tall chimney. The image is overlaid with a semi-transparent blue filter.

KCM

Technological Integration, Effective Processing of Resources.

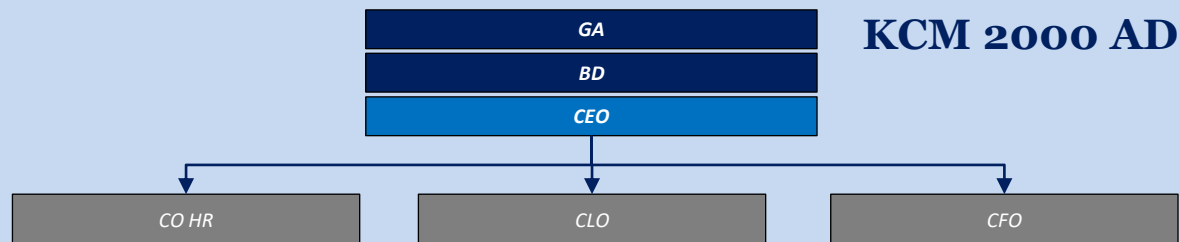
„INNOVATIONS FOR COMPETITIVENESS. THE BASIC INDUSTRIES – A DRIVE FOR GROWTH”
31.01.2018 Sofia, BULGARIA

57 years of sustainable development



- 1961** KCM was inaugurated as state owned company. The Zinc plant was commissioned.
- 1963** Lead Plant was commissioned
- 1991** Precious metals plant was commissioned
- 2000** Privatisation Procedure completed. KCM 2000 AD establishment. KCM 2000 Group formation.
- 2003** New Sulphuric acid Plant commissioned
- 2005** Waste water treatment plant commissioned
- 2007** Spent lead acid batteries treatment installation commissioned
- 2010** EBRD Investment loan was approved and signed for Process Innovation and Production Increase
- 2012** Acquisition of the Lead and Zinc Mine and concentrator complex Gorubso Madan
- 2014** Major improvements in Zinc plant commissioned to achieve up to 30 % SHG Zn from Zn containing industrial wastes
- 2014** New Lead Plant commissioned
- 2017** AgNO₃ production line commissioned

A Successful Bulgarian Industrial Group

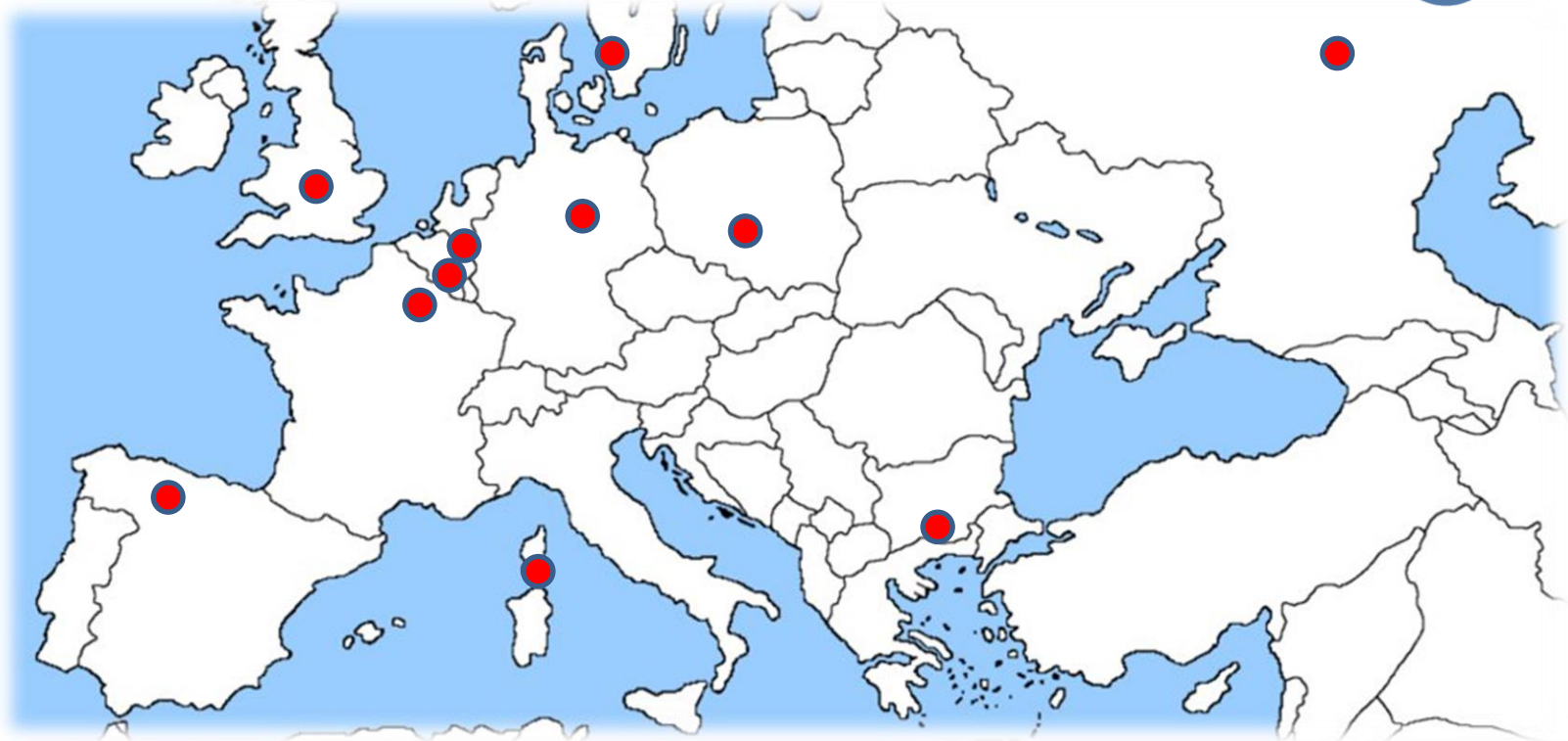


KCM 2000 AD ownership	94.5 %	33 %	100 %	55.26 %	100 %	100 %	52 %	100 %
KCM 2000 Group companies	KCM AD	KCM Trade LTD	KIS LTD	MR 21 AD	KCM Technology LTD	StroyService LTD	Economical Activities LTD	BLZ Metalicon

„ INNOVATIONS FOR COMPETITIVENESS. THE BASIC INDUSTRIES – A DRIVE FOR GROWTH”

31.01. 2018 Sofia, BULGARIA

Important Location in EUROPE



„ INNOVATIONS FOR COMPETITIVENESS. THE BASIC INDUSTRIES – A DRIVE FOR GROWTH”

31.01. 2018 Sofia, BULGARIA

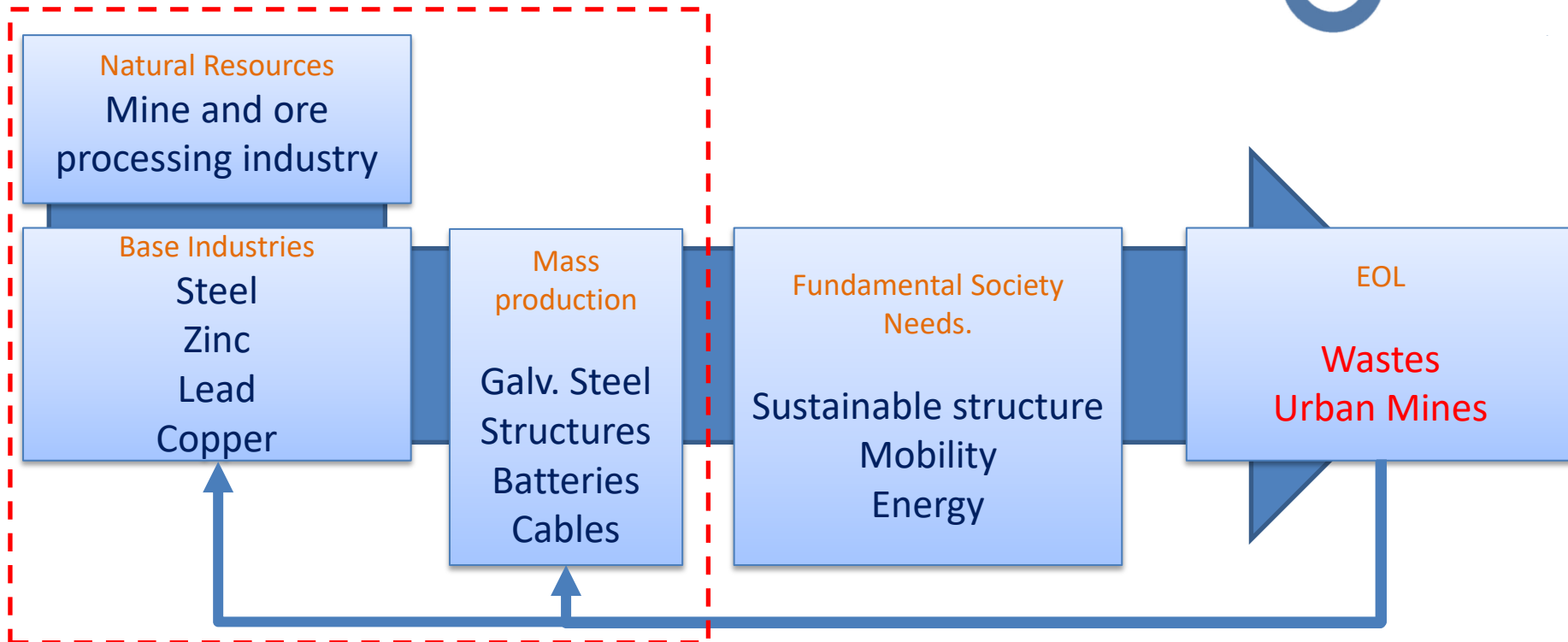
Important Location on The Balkans



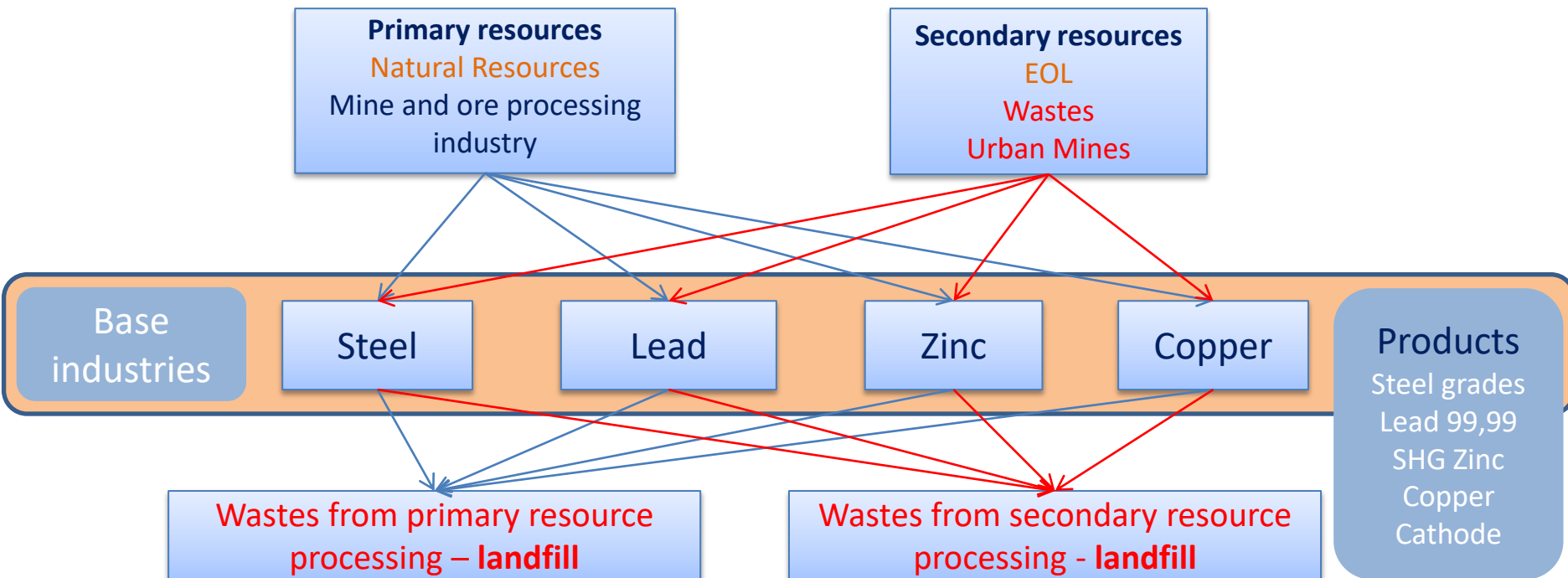
„ INNOVATIONS FOR COMPETITIVENESS. THE BASIC INDUSTRIES – A DRIVE FOR GROWTH”

31.01. 2018 Sofia, BULGARIA

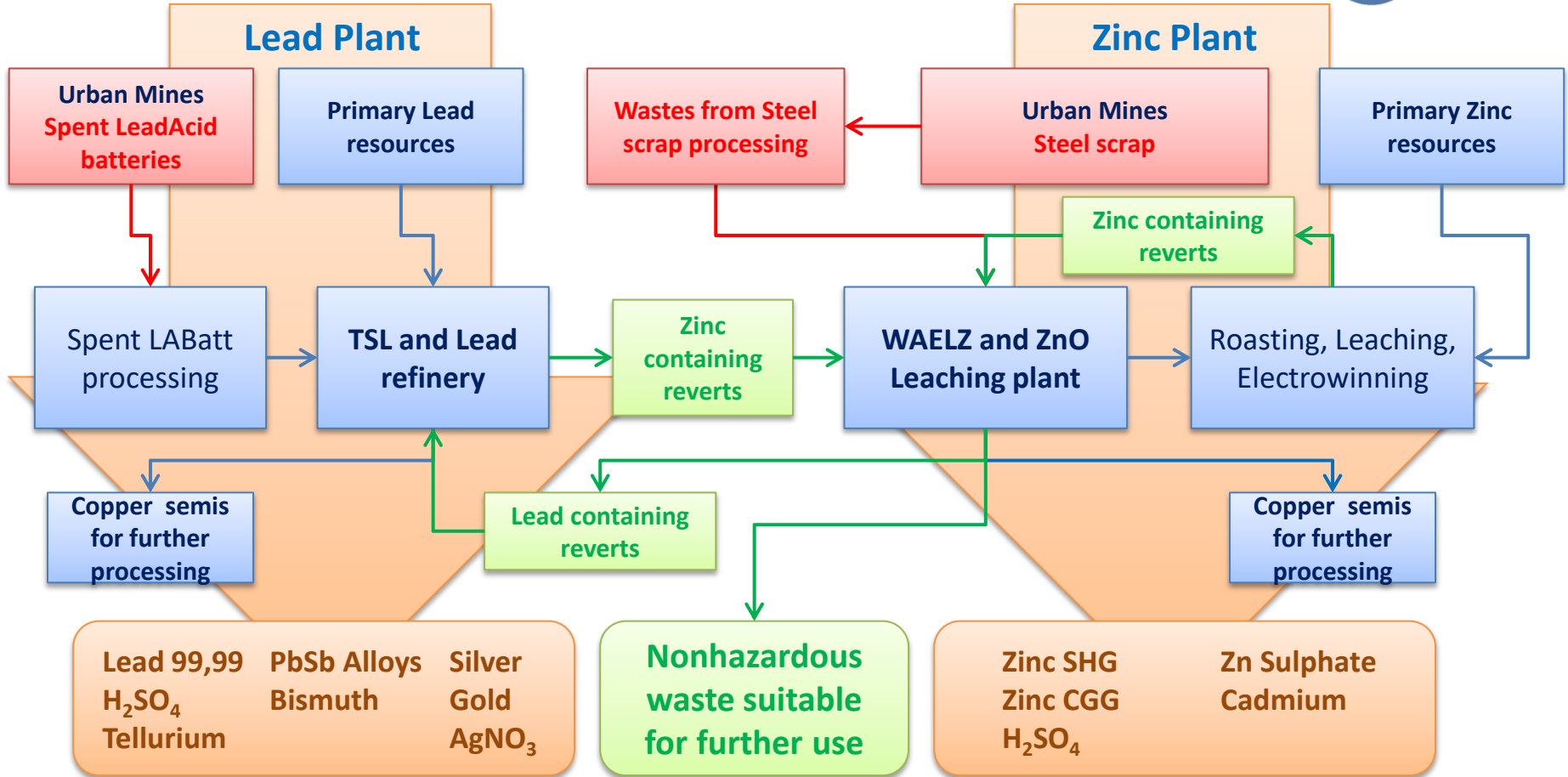
Recycling industry model



Recycling industry model challenge



Technology integration model of KCM



Technology integration model of KCM



Share of metal, produced in KCM from secondary material for 2017:

- **Zinc plant:** **21%**
- **Lead plant:** **22%**
- **Reduced hazardous wastes from base industries**

Technology integration model of KCM



State of the art plant for effective processing of resources

15 years of purposeful and continuous management of projects

EUR 240 mil. CAPEX for Technology integration













KCM is making a Metallurgy with care for people
and environment
